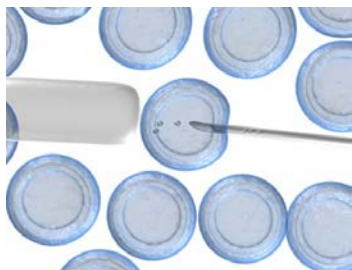




PLURIPOTENT STEM CELLS: APPLICATIONS FOR CARDIOVASCULAR RISK ASSESSMENT

MARCH 18-19, 2013 • AMGEN RESEARCH CENTER, CAMBRIDGE, MA

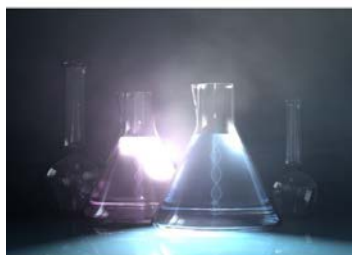
Sponsored by the HESI Cardiac Safety Committee and Safety Pharmacology Society (SPS)



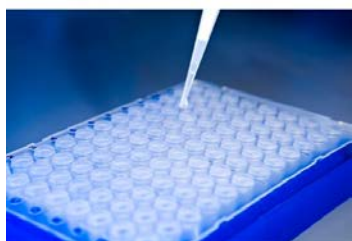
Workshop Objective: Convene an international and multi-disciplinary group of scientists to evaluate the current and potential future use of stem cell platforms and associated technologies in the cardiovascular (CV) risk assessment of pharmaceuticals and/or environmental chemicals.

Key Questions:

- What are current approaches to applying and developing stem cell-derived cardiomyocyte assay platforms?
- How can this technology be used to inform CV risk assessment or pathway evaluation now and where is the potential for new application in the future?
- What additional standards or data may be needed to facilitate the use of these data for translational science decision-making?



Who Should Attend: Interdisciplinary scientists from academia, government, clinical medicine, and industry interested in stem cell-derived cardiomyocyte assay platforms in pharmaceutical and environmental chemical hazard identification.



HESI CITE Workshop Series: This program is recognized as part of HESI's Combining Interdisciplinary and Translational Expertise (CITE) initiative. HESI CITE programs promote innovative approaches to science that engage diverse technical expertise and perspectives to address complex public health issues.

Workshop Registration

Regular

- \$199 – Early bird (until February 11, 2013)
- \$250 – Late (after February 11, 2013)

HESI Member

- \$159 – Early bird (until February 11, 2013)
- \$199 – Late (after February 11, 2013)

Government and Academic

- \$100 – Early bird (until February 11, 2013)
- \$159 – Late (after February 11, 2013)

Register online [here](#).

Workshop Agenda

	March 18, 2012	March 19, 2012
8:00 a.m.		Future Opportunities for Stem Cell-Derived Assay Systems
9:00 a.m.	Keynote Address	Gaps and Opportunities Round Table Discussions
9:30 a.m.		
10:00 a.m.	Stem Cell-Derived Cardiomyocytes	
11:30 a.m.	Part I. Application of Stem Cell-Derived Cardiomyocytes	Bringing it all Together
12:30 p.m.	Lunch and Poster Session Open	Adjourn
2:00 p.m.	Part II. Application of Stem Cell-Derived Cardiomyocytes	
3:45 p.m.	Potential for Use in Regulatory or Safety Decision-making Applications	
5:30 p.m.	Poster Session	



PLURIPOTENT STEM CELLS: APPLICATIONS FOR CARDIOVASCULAR RISK ASSESSMENT

MARCH 18-19, 2013 • AMGEN RESEARCH CENTER, CAMBRIDGE, MA

Sponsored by the HESI Cardiac Safety Committee and Safety Pharmacology Society (SPS)



Workshop Sponsors



Sponsorship Opportunities

HESI is offering sponsorship opportunities. Your chance to present a poster of your latest work and network with attendees!

\$700 Sponsorship Fee Includes:

- Two free workshop registrations
- One guaranteed poster/display board
- Listing in the program booklet
- Listing on the workshop website
- Listing in the HESI Insights Spring edition
- Networking opportunities throughout the conference

Please email Mrs. Jennifer Pierson (jpierson@hesiglobal.org) for more information.

Lodging

A block of rooms has been reserved at the Marlowe Hotel located at 25 Edwin H. Land Blvd., Cambridge, Massachusetts for nights of March 17 through March 20, 2013. The room rate is \$269 per room, per night, plus tax (single or double occupancy). Please secure your hotel reservation by clicking here <http://bit.ly/UwQ2nv>. Reservations must be made on or before **February 18, 2012**.